

bedra Welding

# ACCESSORIES

FOR YOUR COPPER AND  
ALUMINIUM APPLICATION

**bedra**  
intelligent wires

# Maxiglide

Safe wire feeding from the drum to the machine



HD (Heavy Duty) version: Protected by EPDM + Aramid fibers



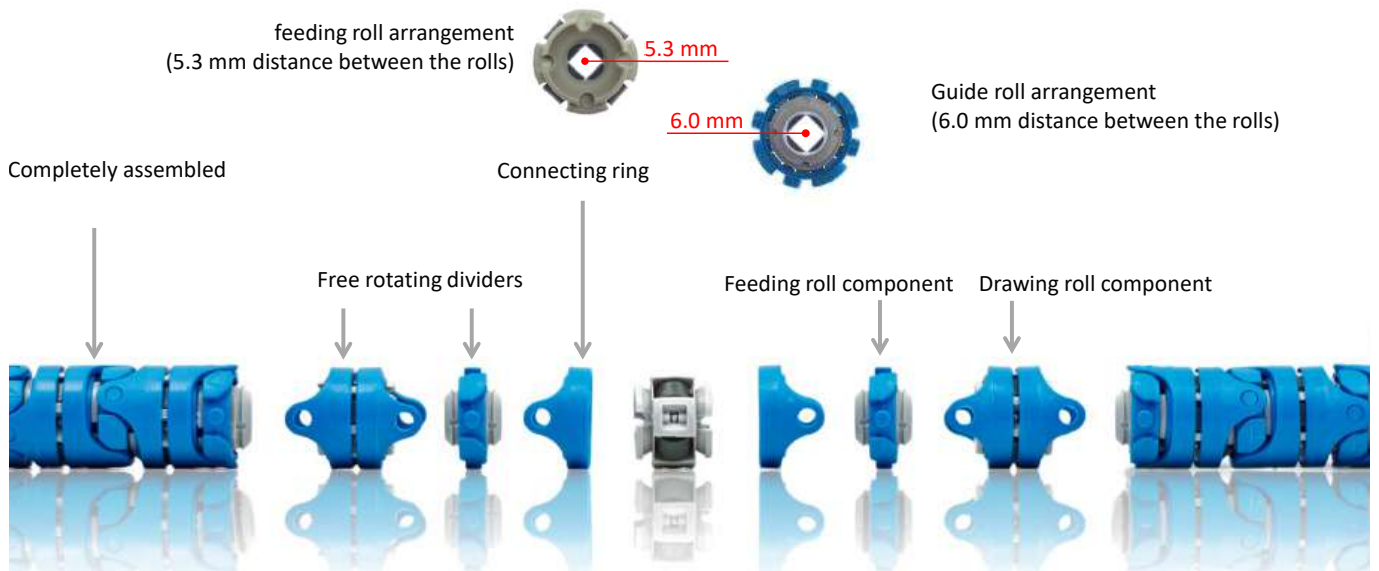
Flex version: Protected by a corrugated PA12 hose

- Smooth wire feeding
- Distance bridging up to 40m
- Long service life depending on use (up to 2 years)
- Flexible use, thanks to high coverage of wire diameters
- Compatible with all systems
- No conveying losses due to runs of curves in the application
- Easy cleaning
- Cost-neutral repairs
- Simple installation

Plug-in couplings  
for your connection



## Technical structure of the Maxiglide



Each unit rotates freely to relieve stresses created by torsion

## Twister

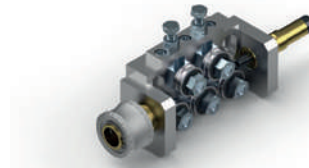
Prevents knots and wire tangles



The Twister gently and reliably compensates for the torsion of the wire with a controlled counteraction. The carefully matched components and gears prevent any wire tangles, loops and knots. The pressure is regulated via a clutch that actuates the feed rollers. This relieves the operator and saves time.

## Straightener

Gives the wire the optimal cast



For use with aluminium and copper alloy wires. With this high-quality straightener, the wire cast can be adjusted in a targeted manner. It is to be placed preferably in front of the feed unit and thus ensures a uniform wire run up to the welding position.

## Hoods

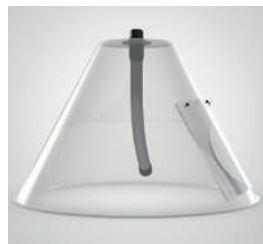
Hood for bedrabox\*



Measures:  
Height: 37 cm  
Ø: 51 cm

\*flyer available separately

Hood for round drum\*



Measures:  
Height: 37 cm  
Ø: 51 cm

\*flyer available separately

Hood for square drum

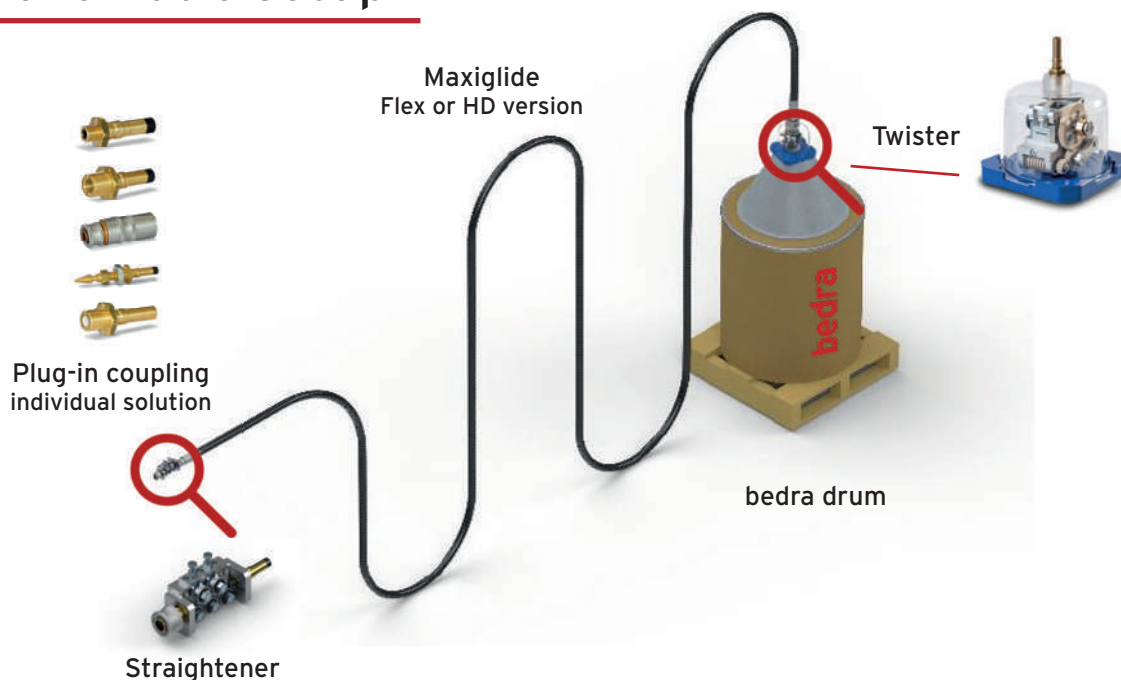


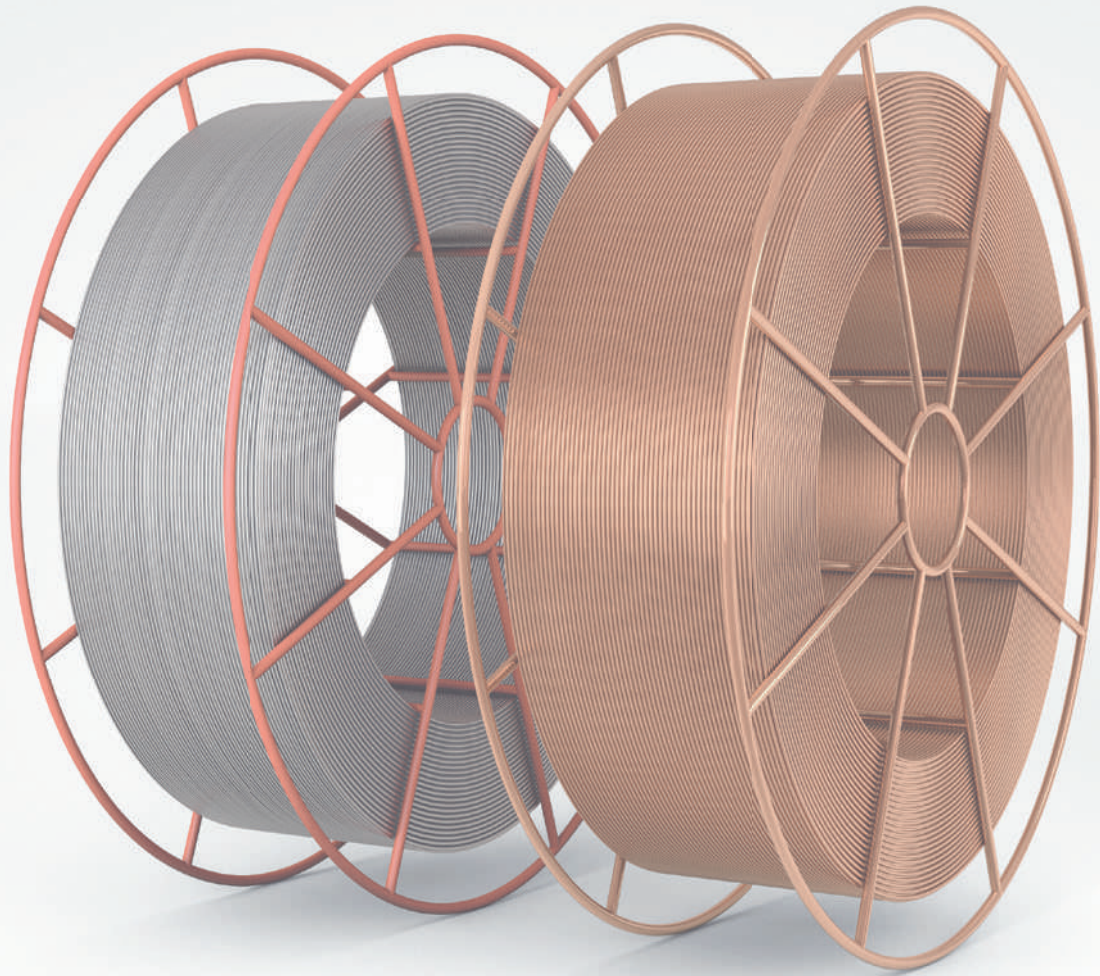
Measures:  
Height: 33 cm  
Length: 61 cm

## Other accessoires

- Heavy duty drum dolly for drums with a diameter or width of 51-62 cm, max. load 500 kg
- Lifter for drums with a diameter of 51 cm, max. load 500 kg
- Further accessories on request

## Schematic setup





---

Berkenhoff GmbH  
(Plant Kinzenbach)  
Berkenhoffstraße 14  
35452 Heuchelheim  
Tel.: +49 641 601 0  
info@bedra.com

---

Berkenhoff GmbH  
(Plant Merkenbach)  
Rehmühle 1  
35745 Herborn  
Tel.: +49 2772 5002 0  
info@bedra.com

[www.bedra.com](http://www.bedra.com)